

MID-RANGE

34 Riviera Drive, Markham, ON, L3R 5M1
Web: www.midrange.ca
E-mail: rdolewski@midrange.ca
Phone: 1-800-668-6470



Installing a New Release To Your iSeries



Richard Dolewski



Upgrading to a New Release

Before installing upgrade

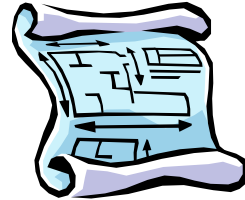
- Plan
- Prepare your system
- Clean your system
- Check disk storage space
- Ensure you have IBM License LPP keys.
- Manual vs Automatic installation
- Save system
- Installing upgrade
- Finishing up the process
- Save system



Upgrading to a New Release

Plan

- Decide when to install upgrade
- Give yourself plenty of time
- Read V5R3 “Memo to Users” to review any incompatibility problems (if upgrading from V5R1 read V5R2 “Memo to Users” as well). Go to:
 - <http://publib.boulder.ibm.com/html/as400/infocenter.html>
- Make sure 3rd party programs will run
- Make sure 3rd party or old IBM hardware will work



3

Additional Planning Tasks

- 4xx and 5xx AS/400s don't support V5R2 or V5R3
- Load source disk must be at least 4gb
- 256mb memory minimum
- New 810, 825, 870, 890 iSeries require V5R2
- New 500, 520, 570 i5 requires V5R3
- LPAR considerations
 - Any LPAR specific PTFs must be applied to all partitions
 - Secondary partitions can be +/- one release of the Primary partition
 - Select the CD-ROM as the Alternate IPL device on Secondary Partitions

4

Additional Planning Tasks V5R3

- Load source disk requires an additional 1.42 GB of storage on the load source from previous releases
 - Load-source disk unit will take approx 1.42 GB for V5R3 during Licensed Internal Code installation.
- New 520 and 570 Model i5 's require V5R3

5

Installation Notes for Licensed Programs

- 5769-SS1 Option 15 – Common Programming APIs Toolkit has been removed after V4R5
- 5769-SS1 Option 17 – PSF/400 Fax Support has been removed after V4R5
- If you have 5769AC1 or 5769AC2 already installed, delete it prior to installing 5769AC3, or it will not install.
- 5769-SS1 Option 20 “OS/400 Advanced 36” has been removed. For additional information see;
 - APAR II09900
 - SC41-4151-00 OS/400 System/36 Migration Assistant V3R6
 - SC41-4152-00 System/36 Migration Planning V3R6

6

Installation Notes for Licensed Programs

- 5769-SS1 Option 24 “Lotus Notes Enhanced Integration” has been removed after V4R5.
- 5769-SS1 Option 29 “Integration for Windows NT” has been removed. It is now a no-charge licensed program 5722-WSV, Integration for Windows Server
- 5722-SS1 Option 34, Digital Certificate Manager installs over 5769-NC1 or 5769-NCE removed after V4R5

7

No Longer Supported in V5R1

- 5769-AC1 Cryptographic Access Provider
- 5697-ADS Tivoli® ADSTAR Distributed Storage
- 5769-AS1 Websphere™ Application Server
- 5769-CB1 ILE COBOL
- 5769-CE1 AS/400 Client Encryption
- 5769-CF1 Retail Application Interface Suite
- 5769-CL1 ADTS CS
- 5769-CL2 VA RPG and CODE/400
- 5769-CL3 VisualAge RPG
- 5769-CX2 ILE C

8

No Longer Supported in V5R1

- 5769-CX5 VisualAge for C++
- 5716-DCT Language Dictionaries
- 5697-FW1 Firewall for AS/400
- Tivo-ITD Tivoli IT Director
- 5769-MQ2 MQSeries
- 5798-NC3 NetCommerce for AS/400, Version 3.1
- 5769-PM1 Performance Management/400e
- 5769-PW1 ADTS Application Development ToolSet
- 5733-PY1 Payment Server for AS/400
- 5769-RD1 OnDemand Client for Windows 3.1, Option 6,7 & 8

9

No Longer Supported in V5R1

- 5769-RG1 ILE RPG
- 5769-SA2 Integration Services for FSIOP
- 1-TD-SVR Tivoli IT Director
- 5798-TBY Facsimile Support for AS/400
- 5798-TBW IBM Wireless Connection
- 5639-VW5 Visual Warehouse 5.2 (part number only)
- 5769-WP1 OfficeVision for AS/400
- 5763-XD1 Client Access for Windows 95/NT
- 5763-XK1 Performance Management/400e
- 5649-xxx All Model 150 products (P05-level software is available)

10

No Longer Supported in V5R2

- 5733-A47 WebSphere Personalization Version 3.5
- 5722-AC2 Cryptographic Access Provider 56-bit
- 5733-AS3 WebSphere Application Server, Standard Edition
- 5733-B2B Connect for iSeries
- 5648-C69 IBM CallPath Server
- 5722-CE2 IBM iSeries Client Encryption (56-bit)
- 5765-D65 IBM DataJoiner Version 2.1.1
- 5769-DP3 IBM DB2 DataPropagator version 7.1
- 5648-GL1 SanFrancisco General Ledger 1.4
- 5648-OM1 SanFrancisco Order Management 1.4

11

No Longer Supported in V5R2

- 5733-PY2 WebSphere Payment Manager V2.2
- 5648-RP1 SanFrancisco Accounts Receivable/Accounts Payable 1.4
- 5648-SF1 SanFrancisco Base 1.4
- 5798-TBG NetView FTP
- 5733-WA3 WebSphere Application Server V3.5, Advanced Edition
- 5798-WC4 WebSphere Commerce Suite,
- 5722-WDS Option 1 AS/400 Tools – Build Tools
- 5722-WDS Option 61 Workstation Tools – WebFacing, CODE

12

No Longer Supported in V5R2

- 5722-WDS Option 62 Workstation Tools – VisualAge RPG
- 5722-WDS Option 63 Workstation Tools – WebSphere Studio
- 5722-WDS Option 64 Workstation Tools – VisualAge for Java
- 5648-WM1 SanFrancisco Warehouse Management 1.4
- 5722-XH1 iSeries Access for Web (V5R1M0)

13

No Longer Supported in V5R3

- 5722-SS1, OS/400 Option 4 - S/36 and S/38 Migration
- 5722-SS1, OS/400 Option 11 - S/36 Migration Assistant
- 5722-SS1, OS/400 Option 16 - Ultimedia System Facilities
- The Electronic Service Agent™, formerly 5798-RZG, is now part of the OS/400 operating system

14

No Longer Supported in V5R3

- IBM HTTP Server - 5722-DG1 - Java CGI no longer supported.
- IBM Original HTTP server no longer supported, must be migrated to APACHE
- Developer Kit for Java (5722-JV1) Support for option 3 (JDK 1.2), option 4 (JDK 1.1.8), and JPDC removed
- Support for Remote Abstract Windowing Toolkit (AWT) withdrawn

15

No Longer Supported in V5R3

- WebSphere Development ToolSet (5722-WDS)
 - Application Development Manager (Option 22) licensed program withdrawn
 - Application Dictionary Services (Option 23) licensed program withdrawn

16

Additional Planning Tasks

- Plan to shut down any IXS, IXA or attached Netfinity Servers during the installation
- Additional time will be required if upgrading from V4R5 to V5R1 or V5R2
 - Spooled-File Conversion
 - User-Profile Conversion
 - Directory Conversion *TYPE 2
 - Database Cross-Reference File Conversion
- Be familiar with control panel operations.

17

Upgrading to a New Release

Prepare your system

- Obtain latest PSP information (preventive service planning).
- iSeries Technical Support Web Site:
 - www.912.ibm.com/
- V5R2M0 install – SNDPTFORD SF98070
- V5R3M0 install – SNDPTFORD SF98080



There's lots of gotchas in here !!

- ECS is important to have set up
- Register for Internet PTF support (iPTF).

18

Upgrading to a New Release

Prepare your system

- Obtain cross reference summaries
- Gives you latest PTF updates for the version you are installing (eg. V5R3)
- V4R5M0 – V5R2M0 install SNDPTFORD SF97044
- V5R1M0 – V5R2M0 install SNDPTFORD SF97071
- V5R1M0 – V5R3M0 install SNDPTFORD SF97072
- V5R2M0 – V5R3M0 install SNDPTFORD SF97081

- If you have an Operations Console, upgrade iSeries Access on the Console before doing the OS upgrade

19

Upgrading to a New Release

Prepare your system

- Evaluate release-level interoperability
- Use option 10 on LICPGM menu to determine current release level
- Important for exchange of data using save and restore commands (target release)

20

Display Installed Licensed Programs

```
Display Installed Licensed Programs

System:  MIDRANGE

Licensed  Installed
Program  Release  Description
5769SS1  V5R1MO L00 OS/400 - Library QGPL
5769SS1  V5R1MO L00 OS/400 - Library QUSRSYS
5769SS1  V5R1MO L00 Operating System/400
5769SS1  V5R1MO      OS/400 - Extended Base Support
5769SS1  V5R1MO      OS/400 - Online Information
5769SS1  V5R1MO      OS/400 - Extended Base Directory Support
5769SS1  V5R1MO      OS/400 - S/36 and S/38 Migration
5769SS1  V5R1MO      OS/400 - System/36 Environment
5769SS1  V5R1MO      OS/400 - System/38 Environment
5769SS1  V5R1MO      OS/400 - Example Tools Library
5769SS1  V5R1MO      OS/400 - AFP Compatibility Fonts
5769SS1  V5R1MO      OS/400 - *PRV CL Compiler Support
5769SS1  V5R1MO      OS/400 - S/36 Migration Assistant
5769SS1  V5R1MO      OS/400 - Host Servers

More...
Press Enter to continue.
F3=Exit  F11=Display option  F12=Cancel  F19=Display trademarks
```

Upgrading to a New Release

Check the Status of Licensed Program

- Type "GO LICPGM" and select option 10
- Make sure no Licensed Programs have an installed status of ***ERROR**

Upgrading to a New Release

Check for any RPQs and Secondary Languages

- Use the DSPSFWRSC command. This goes into more detail than the Licensed Program Display
- Secondary languages
- RPQs i.e. 5798TBY - IBM Facsimile support for AS/400

23

Software Resources List

Software Resources List

Resource ID	Option	Feature	Feature Type	Library	Release	Description
5769999	*BASE	5050	*CODE	QSYS	V4R5M0 L00	AS/400 Licensed Internal Code
5769SS1	*BASE	5050	*CODE	QSYS	V4R5M0 L00	Operating System/400
5769SS1	*BASE	2924	*LNG	QSYS	V4R5M0 L00	Operating System/400
5769SS1	1	5050	*CODE	QSYS2	V4R5M0	OS/400 - Extended Base Support
5769SS1	1	2924	*LNG	QSYS2	V4R5M0	OS/400 - Extended Base Support
5769SS1	2	5050	*CODE	QHLPYSYS	V4R5M0	OS/400 - Online Information
5769SS1	2	2924	*LNG	QHLPYSYS	V4R5M0	OS/400 - Online Information
5769SS1	3	5050	*CODE	QSYS DIR	V4R5M0	OS/400 - Extended Base Directory
5769SS1	3	2924	*LNG	QSYS DIR	V4R5M0	OS/400 - Extended Base Directory
5769SS1	4	5050	*CODE	QMGU	V4R5M0	OS/400 - S/36 and S/38 Migration
5769SS1	4	2924	*LNG	QMGU	V4R5M0	OS/400 - S/36 and S/38 Migration
5769SS1	5	5050	*CODE	QSSP	V4R5M0	OS/400 - System/36 Environment
5769SS1	5	2924	*LNG	QSSP	V4R5M0	OS/400 - System/36 Environment
5769SS1	6	5050	*CODE	QSYS38	V4R5M0	OS/400 - System/38 Environment
5769SS1	6	2924	*LNG	QSYS38	V4R5M0	OS/400 - System/38 Environment
5769SS1	7	5050	*CODE	QUSRTOOL	V4R5M0	OS/400 - Example Tools Library
5769SS1	7	2924	*LNG	QUSRTOOL	V4R5M0	OS/400 - Example Tools Library
5769SS1	8	5050	*CODE	QFNTPCL	V4R5M0	OS/400 - AFP Compatibility Fonts
5769SS1	9	5050	*CODE	QSYSV4R3M0	V4R5M0	OS/400 - *PRV CL Compiler V3R1M0

24

Upgrading to a New Release

Prepare your system

- PTF's required before installation
- Make sure you are running IPL SRC B
- Save system if you have not done so
- 2 full saves



25

Software Agreement PTFs

- Occasionally, situations arise that require specific program temporary fixes (PTFs) before you can install a new release
 - Before you can install V5R3, you **must** temporarily apply a PTF from the *Software Agreement PTFs for V5R1 and V5R2*, SK3T-8163-00, CD-ROM to be able to accept online software agreements for V5R3 licensed programs.

26

Software Agreement PTFs

1. Load the CD-ROM in the optical device.
2. Type GO PTF and press Enter.
3. Select option 8 (Install program temporary fix package) and press Enter. The Install Options for Program Temporary Fixes display appears.
4. Specify the following and press Enter: Device: OPT01
Automatic IPL: N PTF type: 1 Other options: N
5. Locate the CD-ROM labeled *Software Agreement PTFs for V5R1 and V5R2*.

27

Software Agreement PTFs

- For V5R1, the server applies 5722999 PTF MF29250, 5722SS1 PTF SI06069, and the associated PTFs for the installed national languages for your current release
- For V5R2, the server applies PTFs 5722SS1 SI10284 and SI08995

28

Optional Disk Configuration PTFs

- Automatic installation process
 - All non-configured disk units are added to the system auxiliary storage pool (ASP)
- If you do not want non-configured disk units added:
- PTF SI08937 if you are upgrading from V5R1
 - PTF SI08897 if you are upgrading from V5R2
 - Prerequisite PTFs for Licensed Internal Code are included.
 - Must be signed on as security officer (QSECOFR user profile) to use these PTFs to change the disk configuration option

29

Upgrading to a New Release

Prepare your system

- Verify your software order using the prepare for install option
- Locate all CD's that came with release



30

Verifying your Order

Verify the release and national language of your software distribution media:

1. Verify that the CD-ROMs for Licensed Internal Code and OS/400 are for V5R2M0 or V5R3M0. Place the CD-ROMs in the correct order.

31

Verify Your Order

2. Verify that the media you received is in the correct primary language. If your system uses secondary languages, verify that you received media for the installed secondary languages.

Select option **20** (Display secondary languages) from the Work with Licensed Programs (GO LICPGM) menu

Make sure you receive all the licensed keys for the new release of OS/400 and additional Licensed Program products

32

Upgrading to a New Release V5R2

You should put CD's in the following order

- I-BASE_01 Licensed Internal Code
- B29xx_01 Operating System 400 (base)
- B29xx_02 Standard Licensed Programs QUSRSYS and QGPL
- B29xx_03, 04, 05, 06, 07, 08, 09 More No-Charge Licensed Programs
- L29xx_01 Licensed Programs (Keyed Set Products)
- L29xx_02 Licensed Programs (Keyed Set Products)
- F29xx_01, 02, 03 Licensed Programs you ordered
- N29xx Secondary Language Media
- SK3T-0118 softcopy library CD

33

Upgrading to a New Release V5R3

You should put CD's in the following order

- I_BASE_01 Licensed Internal Code for OS/400
- B29xx_01 Operating System/400
- B29xx_02 OS/400 no-charge options
- **B29MM_03, 04 OS/400 no-charge options** (Shipped Separate)
- D29xx_01, 02, 03, 04, 05 OS/400 no-charge options
- L29xx_01, 02 priced licensed programs
- F29xx_01 single licensed programs

Keep the following installation media available for later use:

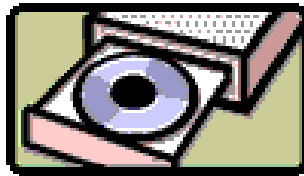
- N29xx_01 Secondary Language Media
- Cydddvrn_01 Cumulative PTF Package (if ordered)
- SK3T-4091 iSeries Information Center

34

Upgrading to a New Release

Prepare your system (Mandatory in V5R3)

- Create a customized installation list arrange CD-ROM's in order listed above
- Select option 5 prepare for install GO LICPGM
- Select option to work with licensed programs for target release
- Load first CD (IBASE) in the optical device



35

Work with Licensed Programs

```
Work with Licensed Programs
System: MIDRANGE

Select one of the following:
Manual Install
  1. Install all
Preparation
  5. Prepare for install
Licensed Programs
  10. Display installed licensed programs
  11. Install licensed programs
  12. Delete licensed programs
  13. Save licensed programs

More...

Selection or command
===> 5
F3=Exit  F4=Prompt  F9=Retrieve  F12=Cancel  F13=Information
Assistant F16=AS/400 Main menu
```

36

Prepare for Install

Prepare for Install

```
System:  MIDRANGE
Type option, press Enter.
  1=Select
Opt      Description
          Work with user profiles
  1      Work with licensed programs for target release
          Display licensed programs for target release
          Work with licensed programs to delete
          List licensed programs not found on media
          Verify system Objects
          Estimated storage requirements for system ASP

Bottom
F3=Exit  F9=Command line  F10=Display job log  F12=Cancel
```

37

Upgrading to a New Release

Prepare your system

- Continue until all CD's are read (x-g)
- Display produced shows licpgms to be replaced (different views)
- Add or remove with option 1
- Confirm target release licpgms display appears. Enter confirm
- Select option to list pgms not found on media. No products listed you have everything

38

Upgrading to a New Release

Prepare your system

- Any products listed – check it out
- Check CD's – maybe omitted one
- Check media description report
- Contact software provider
- When you receive product use the merging additional CDs into the distribution list
- Take option to display licpgms for target release – specify *PRINT



39

Upgrading to a New Release

Prepare your system

- Notes about client access
- The Client Access for Windows 95/NT client (5763-XD1) and the Client Access Enhanced Windows 3.1 (5763-XX1) client products have been removed from the Client Access Family.
- Now supported by iSeries Access Express for Windows (5722-XE1)
- For V5R2 and V5R3, iSeries Access Express Family (5722-XW1) is controlled by a license key.
- More info is available at
<http://www-1.ibm.com/servers/eserver/series/access/>



40

Upgrading to a New Release

QSECOFR profile

- Remove the initial menu
- If there is an initial program for the QSECOFR user profile, be sure it does not add a secondary language library to the library list
- Be especially careful with secondary languages installed on your system

41

QSECOFR

```
Display User Profile - Basic
User profile . . . . . : QSECOFR
Initial program . . . . . : *NONE
  Library . . . . . :
Initial menu . . . . . : MAIN
  Library . . . . . : QSYS
Limit capabilities . . . . . : *NO
Text . . . . . : Security Officer
Display sign-on information . . . . . : *SYSVAL
Limit device sessions . . . . . : *SYSVAL
Keyboard buffering . . . . . : *SYSVAL
Maximum storage allowed . . . . . : *NOMAX
  Storage used . . . . . : 3696060
Highest scheduling priority . . . . . : 0
Job description . . . . . : QDFTJOB
  Library . . . . . : QGPL
```

42

Upgrading to a New Release

Current cumulative packages

- Make sure you have a current package (n – 1)
- Type SNDPTFORD SF99520 for V5R2
(Will also receive Hiper Group SF99519 and Database Group SF99502)
 - Or
- Type SNDPTFORD SF99530 for V5R3



43

Group PTFs (V5R2)

- | | |
|-----------------------------|---------|
| • DB2 UDB (database) | SF99502 |
| • Backup Recovery Solutions | SF99085 |
| • JAVA | SF99169 |
| • Hipers | SF99519 |
| • HTTP | SF99098 |
| • Performance Tools | SF99039 |

There are also various Group PTFs for the WebSphere product line

44

Group PTFs (V5R3)

- DB2 UDB (database) SF99503
- Backup Recovery Solutions SF99185
- JAVA SF99269
- Hipers SF99529
- HTTP SF99099
- Performance Tools SF99139

There are also various Group PTFs for the WebSphere product line

45

iSeries Access

- Order the latest service packs
- Can download via internet:

<http://www-1.ibm.com/servers/eserver/series/access/>

iSeries Access Release Level	Latest Service Pack PTF Number	Server Maintenance	Date PTF was Available	Installed File Date	Target for Next Service Pack
V5R3M0	SI15176	Refer to Server Notes	September 3, 2004	09/02/2004	December 10, 2004
V5R2M0	SI14294	Refer to Server Notes	June 23, 2004	08/08/02	November 19, 2004
V5R1M0	SI11806	Refer to Server Notes	April 30, 2004	05/08/01	Not in plan

46

Check Hardware Status

- Check the hardware configuration for any non-reporting or failed components



47

NON REPORTING

```

Logical Hardware Resources on System Bus
System bus(es) to work with . . . . . *ALL *ALL, 1- 1
Subset by . . . . . *ALL *ALL, *STG, *WS, *CMN, *CRP

Type options, press Enter.

    2=Change detail    4=Remove    5=Display detail    6=I/O Debug
    8=Associated packaging resource(s)    9=Resources associated with IOP
Resource
Opt Description                Type-Model Status      Name
System Bus                      -      Operational SPD01
Multiple Function IOP    * < 675A-002 Operational CMB01
Combined Function IOP    2809-001 Operational CMB02

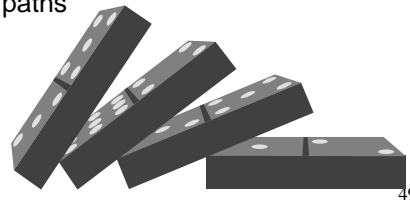
F3=Exit    F5=Refresh    F6=Print    F8=Include non-reporting resources
F9=Failed resources    F10=Non-reporting resources
F11=Display serial/part numbers    F12=Cancel
No failed logical hardware resources were found.

```

48

Work with object Links

- The OS/400 upgrade may fail if there are any user created subdirectories in Client Access
- Use the WRKLNK command to remove the subdirectories (save them first)
- Look in:
 - /QIBM/ProdData/CA400/Express or
 - /QIBM/ProdData/ Access paths



Gather Performance Data

- Establish benchmarks before installing a new version of OS/400
- Compare system performance before and after the upgrade
- Accurately assess any performance improvement
- Isolate any changes to the system that may prevent optimal performance

Verify System Objects

- For the installation process to complete, the following requirements must be met.
 - QSECOFR and QLPINSTALL user profiles must exist in the system distribution directory
 - The QSECOFR profile cannot contain secondary language libraries or alternate initial menus
 - There must be no errors in the database cross reference files

51

Verify System Objects

- The “Verify System Objects” option on the prepare for install menu will check for these conditions



52

Verify System Objects

```
Prepare for Install
System:  MIDRANGE

Type option, press Enter.
 1=Select

Opt      Description
          Work with user profiles
          Work with licensed programs for target release
          Display licensed programs for target release
          Work with licensed programs to delete
          List licensed programs not found on media
 1       Verify system Objects
          Estimated storage requirements for system ASP

Bottom
F3=Exit  F9=Command line  F10=Display job log  F12=Cancel
```

53

Modified or User Created Objects -QSYS

- Run the PRTUSROBJ command
- Objects not created by *IBM or QLPINSTALL will be listed
- Some objects created by PTF's may also be listed

54

Modified or User Created Objects -QSYS

- Some customizations are maintained, see the “Software Installation” manual SC41-5120 for a listing of descriptions.
- If you have duplicated any IBM supplied objects, make new copies after the upgrade to take advantage of new functionality.

55

Accepting License Agreements

- **Required:** Apply 5.1 and 5.2 Software agreement Ptf's prior to upgrade.
- **Required:** accept Software Agreement Prior to an upgrade.
- **Required:** Allocate additional space for LIC.
- **Fail to do any of the 3 steps will cause your install to fail.**

56

Upgrading to a New Release

Setting system values

- WRKSYSVAL
- Check value QALWOBJRST = *ALL
- Check values for QSYSLIBL and QUSRLIBL
- Remove any licensed program libraries and any secondary language libraries
- Write them down before you begin
- Do not remove QSYS, QGPL, QUSRSYS, QHLPSYS or QTEMP
- **QVFYOBJRST** – if set to 4 or 5, change to 3

57

Upgrading to a New Release

Cleaning your system



- Clean up your system of unnecessary clutter
- Permanently applying any PTF's
- Delete PTF save files and cover letters
- Delete any software used from sampler CD
- Delete any licensed pgms you no longer use
- Delete enrollment for any user who no longer uses office vision

58

APYPTF

```
PTF                      Program Temporary Fix                      System:
MIDRANGE
Select one of the following:
  1. Load a program temporary fix
  2. Apply a program temporary fix
  3. Copy a program temporary fix
  4. Remove a program temporary fix
  5. Display a program temporary fix
  6. Order a program temporary fix
  7. Install a program temporary fix from a list
  8. Install program temporary fix package
 70. Related commands
Selection or command
===> APYPTF LICPGM(*ALL) SELECT(*ALL) APY(*PERM) DELAYED(*YES)
      IPLAPY(*YES)
F3=Exit  F4=Prompt  F9=Retrieve  F12=Cancel  F13=Information Assistant
F16=AS/400 Main menu
```

59

Optional Cleanup Task

- RCLSTG - Reclaim storage.
- RCLSTG *DBXREF - Reclaims the database cross reference only.
- RCLDLO - Reclaim Document Library Object
- RCLSPSTG - Reclaim Spool Storage
- EDTCPCST - Edit Check Pending Constraints
- EDTRBDAP - Edit Rebuild of Access Paths

60

Automatic Conversions (V5R2)

Allow extra time for the following:

- Spooled files are converted to increase the number of files per job and future growth and their attributes.
- User Profiles are converted to support independent auxiliary storage pools.
- Directories for /(root), /QOpenSys, and user-defined file systems are being converted.
- Database Cross-Reference files
If upgrading from V5R1, only the Database Cross-Reference files are converted

61

SRC's During Conversions (V5R2)

C900 2950	Database cross-reference files
C900 29B0	Spooled files
C600 4055	User Profiles
C900 2AAC	Directory files

62

Conversion Estimation

- Install Installation Estimation PTF's found on CD SK3T-4105
- Run the QSPESTMT program for spool file conversion time
- Run the QSYESTMT program for user profile conversion time
- Both programs must be run in restricted state

63

Manual vs Automatic Install

Manual installation

- Adding additional disk units
 - Changing your primary language
 - Changing environment 400 or 36
 - Using tapes created with SAVSYS command
- Automatic install
 - If you have no unusual situations you should use automatic installation

64

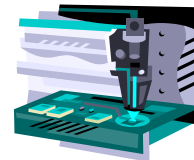
Save the System

- At least two complete system saves
- Option 21 from the GO SAVE menu
- Sign on as QSECOFR
- Dedicated system
- SAVSYS is not the whole thing



Starting Manual Installation

- Ensure system is saved!!!
- Arrange CD's in proper order
- Insert first CD
- Use control panel to set the mode to manual
- PWRDWN SYS *IMMED RESTART(YES) IPLSRC(D)
- Licensed internal code progress screen



66

Starting The Installation

Confirm Language Group

Language feature : **2924**

Press Enter to confirm your choice for language feature.

Press F12 to change your choice for language feature.

Press the Enter key.

67

Starting The Installation

Install Licensed Internal Code

System: XXXX

Select one of the following:

1. Install Licensed Internal Code
2. Work with Dedicated Service Tools (DST)
3. Define alternate installation device

Type a 1

Press the Enter key.

68

Starting The Installation

Install Licensed Internal Code (LIC)

Disk selected to write the Licensed Internal Code to:

Serial Number	Type	Model	I/O Bus	Controller	Device
xx-xxxxxxx	xxxx	xxx	x	x	x

Select one of the following:

1. **Restore Licensed Internal Code**
2. Install Licensed Internal Code and Initialize system
3. Install Licensed Internal Code and Recover Configuration
4. Install Licensed Internal Code and Restore Disk Unit Data
5. Install Licensed Internal Code and Upgrade Load Source

69

Starting The Installation

Install Licensed Internal Code - Status

Install of the Licensed Internal Code in progress.

Percent		XXXXXXXXXX	
complete	+	-----	+

Elapsed time in minutes : x.x

Please wait.

70

Starting The Installation

IPL or Install the System

System: XXXX

Select one of the following:

1. Perform an IPL
- 2. Install the operating system**
3. Use Dedicated Service Tools (DST)
4. Perform automatic installation of the operating system
5. Save Licensed Internal Code

71

Starting The Installation

Install the Operating System

Type options, press Enter.

```
Install
  option . . . . . 1          1=Take defaults (No other
                               options are displayed)
                               2=Change install options

Date:
Year . . . . .           —           00-99
Month . . . . .         —           01-12
Day . . . . .           —           01-31
Time:
Hour . . . . .          —           00-23
Minute . . . . .        —           00-59
Second . . . . .        —           00-59
```

72

Upgrading to a New Release

Starting installation

- 6 installation steps – each with status
 1. Creating needed profiles
 2. Restoring profiles to library qsys
 3. Restoring language objects to qsys
 4. Upgrading program table
 5. Installing database files
 6. Completing OS/400 installation
- Any SRC errors appear in the panel – check in the install book for recovery

73

Starting The Installation

```
Message ID. . . : CPI2070 OS/400 Installation Status

Stage 2 |-----+
        | XX % |
        +-----+

Installation                               Objects
Stage                                       Completed   Restored

1 Creating needed profiles and libraries . . : X

>> 2 Restoring programs to library QSYS . . : XXXXX

3 Restoring language objects to library QSYS:
4 Updating program table . . . . .:
5 Installing database files. . . . .:
6 Completing OS/400 installation . . . . .:
```

74

Starting The Installation

```
Sign On
System. . . . . : XXXX

Subsystem . . . . : XXXX
Display . . . . . : XXXXXXXX

User. . . . . QSECOFR
Password . . . . .
Program/procedure . . . . .
Menu . . . . .
Current library . . . . .
```

75

Starting The Installation

```
IPL Options

Type choices, press Enter.

System date . . . . . XX / XX / XX      MM / DD / YY
System time . . . . . XX : XX : XX      HH : MM : SS
Clear job queues. . . . . N              Y=Yes, N=No
Clear output queues . . . . . N          Y=Yes, N=No
Clear incomplete job logs . . . . . N    Y=Yes, N=No
Start print writers . . . . . Y          Y=Yes, N=No
Start system to restricted state  N      Y=Yes, N=No

Set major system options. . . . . N      Y=Yes, N=No
Define or change system at IPL. . . . . N Y=Yes, N=No

Last power-down operation was ABNORMAL
```

76

Starting The Installation

```
LICPGM                      Work with Licensed Programs
System:  XXXX
Select one of the following:

Manual Install
1. Install all
```

77

Starting The Installation

```
Manual Install                      System:  XXXX
Type choices, press Enter.

Install option . . . 4
1=Installed products
2=All products
3=New products
4=Installed and additionally selected products

Installation device  OPT01          Name
Replace if current   N              Y=Yes N=No
Automatic IPL . . . N              Y=Yes N=No
```

78

Starting The Installation

```
Installing Licensed Programs
System: XXXX
Licensed programs processed . . . . . : 0 of XXX
Licensed program install in progress
```

79

Starting The Installation

```
Installing Licensed Programs
System: XXXX
Licensed programs processed . . . . . : X of XXX

Licensed
Program  Option  Description  Type
5722SS1  2         OS/400 - Online Information  2924
```

80

Starting The Installation

```
Display Messages
System: XXXX
Queue . . . . . : QSYSOPR      Program . . . . . : *DSPMSG
Library . . . . . : QSYS       Library . . . . . :
Severity . . . . . : 95        Delivery . . . . . : *BREAK

Type reply (if required), press Enter.
Load the next volume in CD-ROM device OPT01 (X G)
Reply . . . . . G
```

81

Upgrading to a New Release

Verifying completing

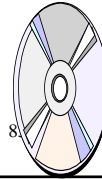
- Sign On as QSECOFR
- GO LICPGM
- Option 50
- Look through the logs for anything unusual – errors, anything not successfully completed



82

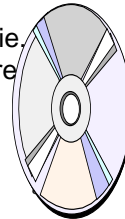
Install Additional LPPs

- Make sure 5722-SS1 Option 12 – Host Servers is installed.
 - This is required to end the file server, database server, iSeries NetServer
- 5722-SS1 Option 33 – PASE. IBM recommends installing this no-charge option.
 - Enhanced DNS Server and the ILE C++ Compiler require PASE
- Install any other no-charge Licensed Program Products or keyed Licensed Program Products that you ordered



Completing The Installation

- If needed, install any secondary languages
- If you still have default passwords for your service tools user profiles, change them now (case sensitive)
- Verify the compatibility of your licensed programs:
 - GO LICPGM
 - Option 10
 - If *COMPATIBLE is not listed next to a licensed program, look in Appendix E of the iSeries Software Installation Manual for installed status values
- If you have customized an IBM-supplied program ie. QSTRUP in QSYS in a previous release, make sure you re create this program to run correctly in the new release



Completing The Installation

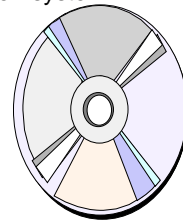
- BRMS: You must initialize BRMS after the upgrade. A product initialization job is automatically submitted.
- SAVLIB LIB(*NONSYS), SAVLIB LIB(*ALLUSR) and SAVCHGOBJ LIB(*ALLUSR) commands save libraries in different order.
- A new System value QTIMEZONE has been introduced in V5R3 to set the daylight saving time.

85

Load and Apply PTFs

Installing the cumulative CD

- Separate instructions
- Check Preventative Service Planning to see if there are any defective PTFs you need to omit
- GO PTF
- Option 8 – install PTF package
 - IPL to apply cumulative PTFs
 - GO LICPGM option #50 – check for “Initialize system completed successfully” message.
- Install group PTFs
- Install Hiper PTFs
- Install Client Access Service Packs
- IPL to apply



86

Finishing Up

- GO LICPGM again
- Option 50 and option 10
- Any System Values you changed for the upgrade can be changed back
- Key in any authorization codes as needed
- WRKLICINF – add licensed keys and update usage limits
- 3rd Party Software (Updates or Installs)
- Convert performance data

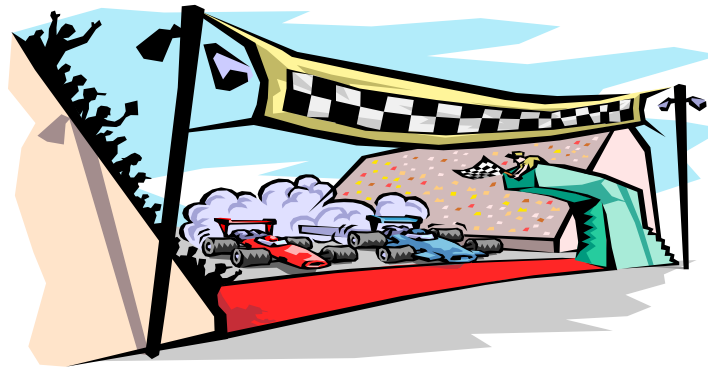


87

Conversion after Upgrading from V4R5

- After upgrading to Version 5 Release 2, conversions occur to the database file objects on first use
- If you upgraded from V4R5, STROBJCVN LIB(*library*) OBJTYPE(*FILE) for each of your production libraries
- Convert IFS Objects to *TYPE2 pre V5R2
CVTDIR OPTION(*CONVERT) FILESYS(*ROOT)
FORMAT(*TYPE2)
- **You're done...almost**

88



One more complete system saves

89

Before You Jump In

Plan, Plan, Plan.....



MID-RANGE

34 Riviera Drive, Markham, ON, L3R 5M1
Web: www.midrange.ca
E-mail: rdolewski@midrange.ca
Phone: 1-800-668-6470

90